



Entabeni Safari Conservancy Fact Sheet

Entabeni Safari Conservancy “The Place of the Mountain”, is situated in the World Heritage “Waterberg Biosphere” of the Waterberg region. Approximately a three-hour drive north of Johannesburg, this 22 000ha malaria-free reserve boasts five eco-systems. The upper escarpment offers majestic craggy rock formations and wide-open grass plains. This is separated from the lower plateau by 600m high cliffs. The lower escarpment is approximately three degrees warmer and comprises sandveld vegetation and a series of wetlands.



CLIMATE

Moderate climate with a summer rainfall (Malaria Free). Days tend to be hot in summer, cooling down in the evenings.

DISTANCES

Johannesburg International Airport	285 km
Pretoria City	230 km

LANDING STRIP

Located at Legend Golf & Safari Resort

For more information please contact Marcia Moller on 082 307 7732 / 015 453 0687

DIRECTIONS / GPS COORDINATES

Important Notice: It is recommended that guests follow these directions instead of relying on a GPS as game fencing restricts access to certain roads in rural areas.

Road Directions to Upper Escarpment from Pretoria:

Take N1 North Highway from Pretoria to Polokwane (Pietersburg). Keep on the N1 through Carousel and Kranskop Tollgates. Travel a further 32km on the N1. Take the Mookgophong (Naboomspruit) R101A offramp/exit (Route 289). Drive 8km to Mookgophong (Naboomspruit). Turn left at the second traffic light in town centre (R520) into Nelson Mandela Road. Continue on the R520 for 11km until you reach a T-junction. Turn left and continue for 500m and turn right at the Marken sign. Keep on the tar road for 24km. The road becomes a gravel road. Continue on this road for another 21.5km. You will see an ENTABENI sign on the right-hand side. Turn right and drive 3.3km on a dirt road until you reach the security entrance.

Upper Escarpment Main Gate:	S 24 08' 35. 6"	E 28 34' 34. 6"
------------------------------------	-----------------	-----------------

Road Directions to Lower Escarpment from Pretoria:

Take N1 North Highway from Pretoria to Polokwane (Pietersburg). Keep on the N1 through Carousel and Kranskop Tollgates. Travel a further 32km on the N1. Take the Mookgophong (Naboomspruit) R101A offramp/exit (Route 289). Drive 8km to Mookgophong (Naboomspruit). Drive straight through the town of Mookgophong (Naboomspruit) on the R101A (29km) till you reach the Sterkrivier (Doorndraai Dam) turnoff (Legend Golf & Safari Resort signboard). Turn left and continue for 22km till you reach the Haakdoring turnoff. Turn left and continue for a further 10km on gravel road (passing the Legend Golf Resort traffic circle) until you reach the big ENTABENI PRIVATE GAME RESERVE sign on your right-hand side and the security entrance gate.

Lower Escarpment Main Gate: S 24 13' 02. 5" E 28 42' 54. 1"

FACILITIES

Fully Licensed Bar & Restaurants
Baby Sitting

Curio Shops
Secure Parking

Laundry Service

ONSITE ACTIVITIES

Game Drives in open vehicles
Helicopter Flights
Pedi Cultural Village
10-Hole Tribute Course

Birding Safaris
Boat Cruises
Spa
Extreme 19th Hole

Bush Walks
Swimming Pool
18-Hole Signature Golf Course
Endangered Wildlife Centre

ACTIVITIES BY PRIOR ARRANGEMENT

Ballooning Safaris
Drumming

Abseiling
Marimba Band

Quad Bikes
Archery

Special programmes for children and Teambuilding options available on request.

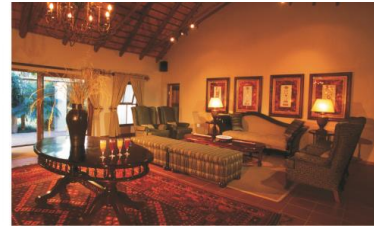
MINIMUM TRAVELLING TIME BETWEEN LODGES & OUTSIDE VENUES

(Not taking game viewing opportunities into account and measured in minutes)

Outside Venues	Lakeside	Kingfisher	Ravineside	Wildside	Hanglip
Hippo Boma	5	5	15	60	70
Boekenhout Boma	35	35	25	50	60
Fig Trees - UE	25	25	10	40	50
Hanglip View Point	45	45	35	55	65
Yellowwood Picnic Site	35	35	25	35	45
Pedi Cultural Village	90	90	80	25	35

Routes taken and conditions of roads, due to rain etc. may also influence travelling times.

HANGLIP MOUNTAIN LODGE: LOWER ESCARPMENT



Discover the exclusive Hanglip Mountain Lodge with its 10 luxury en-suite thatched rooms on the lower escarpment of the malaria-free Entabeni Safari Conservancy, surrounded by wetlands and plains. This secluded lodge is refreshingly alluring with its unique blend of luxury and true African wilderness with views stretching over the lake and plains to Hanglip Mountain and the Waterberg Range.

Room Facilities: 10 Rooms

En-suite Bathroom	Direct Dialling Telephone	Hair Dryer
Tea & Coffee Making Facilities	Ceiling Fan	Telephone
Electric Blanket	Electronic Safe	Mini Bar (stocked on request)
Adapter Plugs on Request	Rooms Serviced Daily	

Dining Options:

The lodge offers fine dining in the restaurant as well as in the garden or in the Boma. Various outside venues are available for a traditional braai, picnic or for that special meal in nature.

KINGFISHER LODGE: UPPER ESCARPMENT



Set on the banks of Lake Entabeni, Kingfisher Lodge is the most exclusive and luxurious of all the lodges, offering superb personalized service. In the main lounge and dining area the ambience is inviting with elegant decor, specially designed furniture and a fireplace ensuring an enjoyable and relaxed atmosphere. The lodge has a spacious lounge/dining room, which opens onto a wooden deck. The eight deluxe bedrooms are stylishly decorated and feature fireplaces, mini-bars and private decks. The lodge is also equipped to accommodate guests with mobility challenges. The honeymoon suite features an exquisite four poster bed and a Jacuzzi bath with views of the lake.

Room Facilities: 8 Rooms

En-suite Bathroom	Telephone	Hair Dryer
Electric Blanket	Ceiling Fan	Tea & Coffee Making Facilities
Heater	Adapter Plug on Request	Rooms Serviced Daily
Mini Bar (stocked on request)	Fireplace	Electronic Safe

Dining Options:

Kingfisher Lodge offers a selection of venues ranging from the Dining Room to the Deck, Boma, Garden or Pool. Private dinners on your own deck or in the room in front of the fireplace can also be arranged. A romantic meal for two can also be organized on the Bottom Deck. Various Bush Braai & Picnic Venues are available for added excitement.

LAKESIDE LODGE: UPPER ESCARPMENT



Located on the banks of Lake Entabeni, luxurious bedrooms are linked by thatched walkways to the Reception, Restaurant, Conference Room and Boma. Lake Entabeni, 1, 7 km's long, lies between soaring bluffs and peaks, a wonderful place for bird-watching and viewing a rich variety of wildlife. The hippos of Lake Entabeni are a special feature. Enjoy sundowners on your own private deck with the always-changing colours of the Entabeni Mountain reflecting in the lake.

EAGLE'S NEST : UPPER ESCARPMENT – SATELLITE LODGE TO LAKESIDE

The exclusive Eagle's Nest with four en-suite bedrooms nestles high on a hill overlooking Entabeni Lake and Mountain. This luxury wooden and stone lodge, built on stilts, provides a perfect setting with spectacular bird's-eye views. A spacious, private lounge and dining area with fireplace leads to a unique rock-face boma and sun deck.

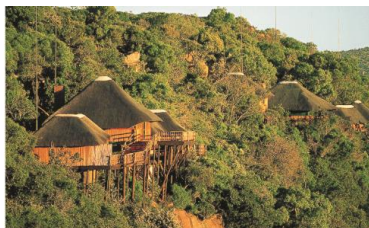
Room Facilities: 24 Rooms at Lakeside and 4 Rooms at Eagles Nest

En-suite Bathroom	Telephone	Hair Dryer
Tea & Coffee Making Facilities	Adapter Plug on Request	Rooms Serviced Daily
Mini Bar (stocked on request)	Ceiling Fan	Electric Blanket
Wall Heater	Electronic Safe	

Dining Options:

Meals are mainly buffet style. Meals are served in the Lakeside Restaurant, Lakeside Boma, Garden, Springbok Bar, or Lower Deck all with a view of Lake Entabeni and Entabeni Mountain. Outside venues are also available for that "Meal in the Bush" experience (weather permitting). Guests staying at Eagle's Nest make use of the Lakeside Lodge dining facilities.

RAVINESIDE LODGE : UPPER ESCARPMENT



Ravineside Lodge comprises tranquil thatched wooden lodges on stilts with magnificent views. Each lodge has 3 or 4 en-suite bedrooms with an African ethnic theme. A private open-plan lounge and bar area extends to the open sun decks. From here guests may indulge in bird and game watching and experience the beauty of the ravine with the rippling sound of water far down in the valley. Due to the location of the rooms and the number of stairs to climb, this lodge is not recommended for the elderly or for families with small children. It must also be noted that the rooms are situated some distance from the main lodge and guests need to be transported to their rooms from the main facilities.

Room Facilities: 22 Rooms

En-suite Bathroom	Telephone	Hair Dryer
Tea & Coffee Making Facilities	Adapter Plugs on Request	Rooms Serviced Daily
Mini Bar (stocked on request)	Ceiling Fan	Electric Blanket
Wall Heaters	Electronic Safe	

Lounges are furnished with a lounge suite, dining table and chairs, bar counter with bar stools and an upright fridge.

Dining Options:

Meals can be enjoyed in the dining room and bar area, both with fireplaces, or outside in the Ravineside boma, in the shade of a 100 year old Fig tree, in the beautiful gardens and various outside venues. Ravineside offers a selection of menus ranging from buffet to individually tailored menus for Bush Braais and Picnics.

WILDSIDE SAFARI CAMP : LOWER ESCARPMENT



Nestled against the majestic cliffs of the Waterberg Mountain lies Wildside Safari Camp where you can experience the wild side of the bush. Stay close to nature in tented chalets on wooden decks. Traditional South African hospitality and superior cuisine await you in the informal dining and bar area extending to the boma. Here, in the warm atmosphere around the campfire, you will experience an African night at its best.

- | | | |
|--------------------------------------|--------------------------------|--------------------------|
| Room Facilities: | 20 Tented Chalets | |
| En-suite Bathroom | Tea & Coffee Making Facilities | Ceiling Fan |
| Outside Patio | Telephone | Adapter Plugs on request |
| Electric Blanket | Hair Dryer | Electronic Safe |
| Mini Bar Fridge (stocked on request) | | |

The Family Tented Chalets have both a Bath and Outdoor Shower

Dining Options:

Meals are usually served in the Restaurant. Wildside Boma is situated close at hand for those special evening meals around the open fire. The pool area is ideal for day time meals and light lunches. The Marula Boma is the ideal venue for that special “Out in the Bush” meal experience. Dining is informal.

